

# Edgefield Secondary School

## Mobile Device Management

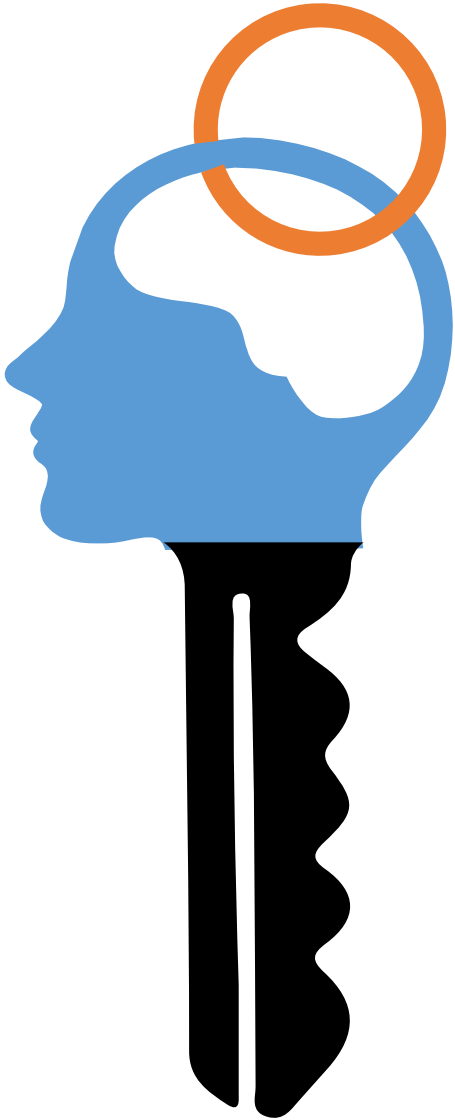


# Mobile device management (MDM)

An **MDM** solution control to **deploy, monitor, and manage devices**



# Basic Features in ScreenGuide [Parent]



## **Configure daily Screen Time to limit overexposure**

Parents are able to configure the amount of time their children will be allowed to use the mobile device at home.



## **Prevent distractions when it's time to study or rest**

Parents can disable the device to maximize the amount of sleep or study focus a child needs using the scheduler for the Time-Out feature.



## **Remotely lock the device**

The Block Now mode within the Time-Out feature helps parents inactivate the device right away when they need to.



## **Hide and show apps from children**

Parents can give their children access only to selected apps. Parents can also hide apps during set times.

# Restrictions under MDM (ScreenGuide)

<b>Restricted Features</b>	<b>Reason</b>
Adding Game Center friends not allowed	To stop gaming and concentrate on learning
Automatically downloading apps not allowed	To prevent download of unnecessary apps and take up iPad space
Apple Classroom automatic class joining enforced	To allow teachers' to manage students' screen time during lesson
Enabling Screen Time not allowed	To enforce above timings and self-discipline
Erase content and settings not allowed	To enforce restrictions
Erotica in Apple Books not allowed	To protect child's wellness
Explicit content not allowed	To protect child's wellness
iTunes Store not allowed	To prevent download of unnecessary apps and take up iPad space
Game Center not allowed	To stop gaming and concentrate on learning
Social Media not allowed	To prevent distractions and concentrate on learning

# Timings of Restrictions

Periods	Timing	Restriction
School Time (Weekdays)	6.30am to 6.30pm	Restricted to School Apps
Rest Time (Weekdays)	6.30pm to 10.00pm	No Restrictions Parental Control can be used
Weekend	6.30am to 10.00pm	No Restrictions Parental Control can be used
School & Public Holidays	6.30am to 10.00pm	No Restrictions Parental Control can be used
Sleeping time	10.00pm to 6.30am	Restricted to Clock App

# Timeline for MDM implementation

<b>Period</b>	<b>Action Performed</b>
18 April to 30 April	Setting up and Installation of MDM on child's device
2 May 2019	Implementation of Restrictions

- Kindly update the school if an iPad is replaced
- Please give us 7 working days to solve issues when reported to Mr Shasi at [shasikumaran\\_chandr\\_segaran@schools.gov.sg](mailto:shasikumaran_chandr_segaran@schools.gov.sg)

# Setup ScreenGuide

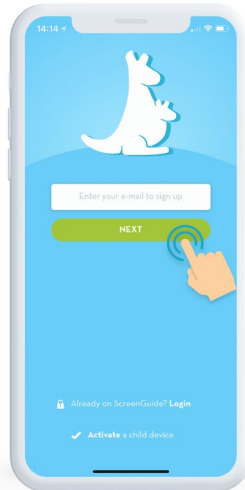
## Step 1

Download App  
from app store



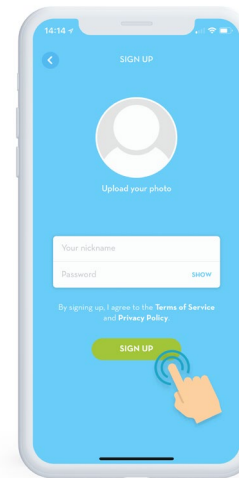
## Step 2

Enter your email to create  
your account.



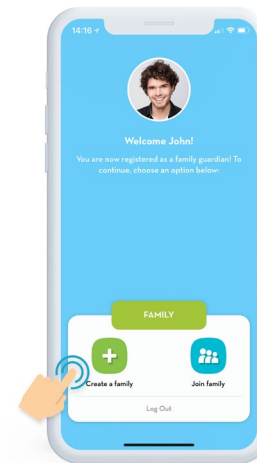
## Step 3

Fill out your account info  
and click "SIGN UP".



## Step 4

Click "CREATE A FAMILY"  
to continue.



# Setup ScreenGuide

<http://screen.guide/connect>

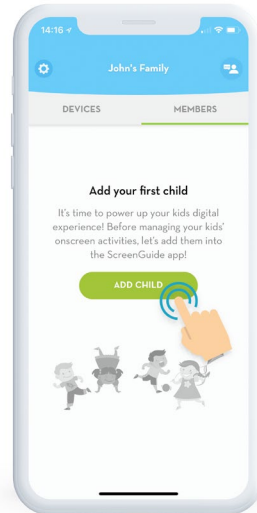
## Step 5

Type your family name and click **“CREATE”**.



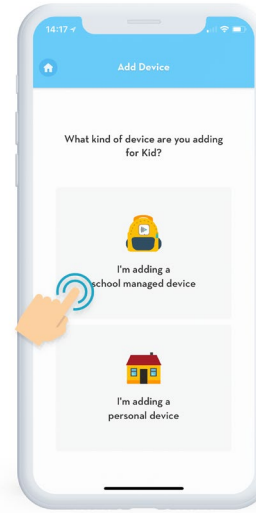
## Step 6

Next, add your child to your account.



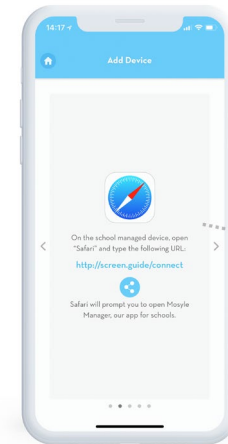
## Step 7

Select **“I'm adding a school managed device”**.



## Step 8

Using the browser on your child's device, access the highlighted blue link.



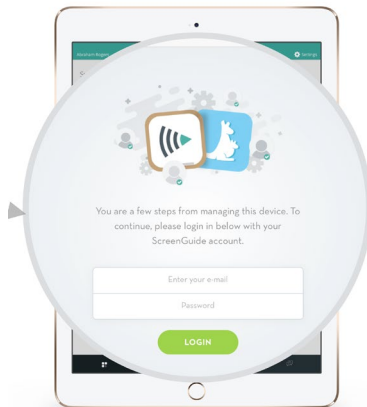


# Setup ScreenGuide

<http://screen.guide/connect>

## Step 9

You will be redirected to the Mosyle Manager app - enter your ScreenGuide login credentials:



## Complete

Once you login with your **ScreenGuide** account info, within the Mosyle Manager app, you'll be prompted to enter a passcode in order to connect your child's school-managed device to your **ScreenGuide** account. Enter the passcode shown here:

**7D576**

<https://manager.mosyle.com/forparents>

# Walkthrough with ScreenGuide

[https://www.youtube.com/channel/UCfpEFX6ouqkspnu\\_JF8WmdA](https://www.youtube.com/channel/UCfpEFX6ouqkspnu_JF8WmdA)



# What about Mobile Phones?



<https://support.apple.com/en-sg/HT201088>

**IOS**

**SCREEN TIME UNDER IPHONE SETTINGS**

**Android**

**GOOGLE FAMILY LINK APP**

<https://families.google.com/familylink/>



Thank You

